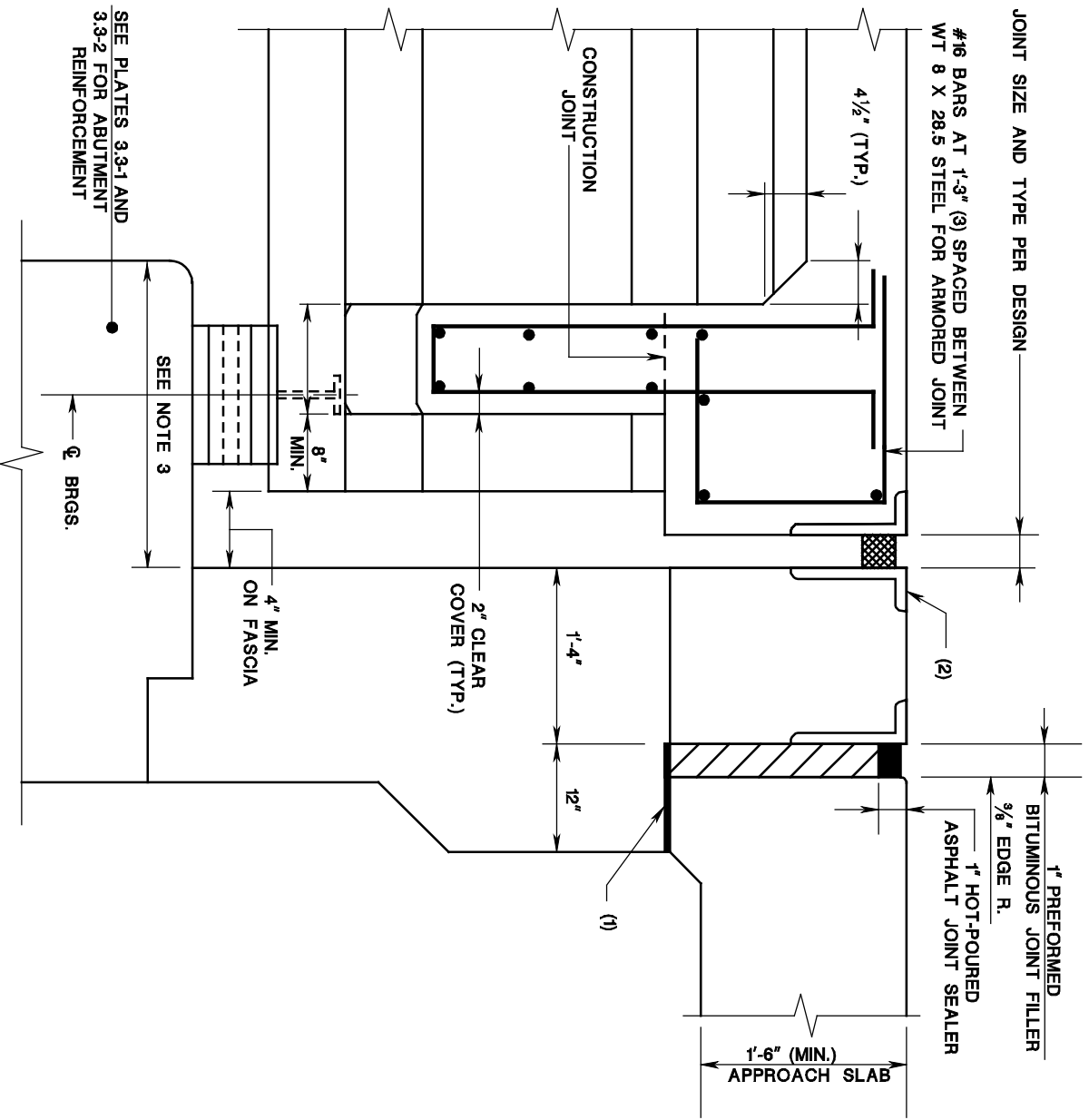


SECTION AT ABUTMENT, PC I-BEAMS

ISSUED: 2009

PLATE
3.10-1



NOTES:

1. A 1/4" THICK PIECE OF PREFORMED BITUMINOUS JOINT FILLER SHALL BE LAID IN AND COVERED WITH ASPHALT ROOFING CEMENT ON THE SURFACE WHERE THE APPROACH SLAB SHALL REST.
2. THE #16 REINFORCEMENT STEEL IN THE HAUNCH BETWEEN BEAMS SHALL BE LAPPED TO THE TOP LONGITUDINAL REINFORCEMENT AND SHALL BE CORROSION PROTECTED.
3. SEAT LENGTH SHALL SATISFY SEISMIC DESIGN REQUIREMENTS.